

THE PIRATE GRAM

OFFICIAL NEWSLETTER OF PEMBROKE PINES ELEMENTARY SCHOOL
A TITLE I SCHOOL



MESSAGE FROM MS. BELL

Greetings,

Spring is here and we are all continuing to blossom here at PPE. The school year continues to progress rapidly and our Pirates are doing such a great job. Even during this challenging time we are able to stay strong, continue to work as a family and do the very best we can to make sure all students receive a high quality education. We also continue to strive to make sure all students have social and emotional lessons each day so that they will be equipped with the tools needed to handle the stress that sometimes come their way.

Testing season is upon us and daily attendance will now even be more crucial. Please see to it that your child attends class daily, whether on campus or remotely. If they must be absent please call the front office to report it.

As we embark on the 4th quarter, I encourage everyone to work on finishing the school year strong! I know it has been a challenging year, but I am confident in our Pirate Family and despite the challenge we will end the school year mightily.

Wishing everyone peace and love!

Ms. Bell

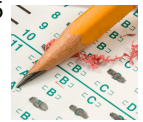


April 2 - No School

April 5 - Grade 1 Material Distribution at 2:30pm

April 7 - VPK Distribution at 2:30pm
Kindergarten Virtual Roundup at 4:00pm

April 8 - Early Release Day - Dismissal at 12:00pm
April 12 - 30
FSA Testing for Grades 3 - 5
(see dates on page 3)



April 14 - Report Cards Issued

April 19 - SAC Virtual Meeting

April 21 - Administrative Professional Day



April 26 - 30

Autism Awareness Week
(see dates on page 2)



April 29 - Interim Reports Issued

APRIL 2021

THE PIRATE GRAM

OFFICIAL NEWSLETTER OF PEMBROKE PINES ELEMENTARY SCHOOL
A TITLE I SCHOOL



DON'T BE LATE

Students arriving to school after 8:01 am are considered tardy. All students' tardy minutes are recorded and monitored.

AUTISM AWARENESS WEEK

APRIL 26-30, 2021

Autism is a complex developmental disability which primarily affects a person's ability with social interaction and communication. Autism is known as a spectrum disorder, because it affects each individual in different ways and to varying degrees. Show support of those affected by Autism by participating in our spirit days!

Monday, April 26 - BE CALM- Wear a BLUE t-shirt. BLUE is the most "sensory" calming color

Tuesday, April 27 - Hats Off to Autism - Hat Day

Wednesday, April 28 - Be An Individual - Wacky Wednesday

Thursday, April 29 - You Don't need a Cape to be a Superhero. Wear your favorite superhero t-shirt

Friday, April 30 - Together Everyone Accomplishes More. Wear your PPE Team t-shirt or Tie Dye Autism Awareness t-shirt.



THE PIRATE GRAM

OFFICIAL NEWSLETTER OF PEMBROKE PINES ELEMENTARY SCHOOL
A TITLE I SCHOOL



FSA TESTING SCHEDULE

- Tuesday, April 13 - Grade 3 Session 1 ELA: Face to Face Students
- Wednesday, April 14 - Grade 3 Session 2 ELA: Face to Face Students
- Thursday, April 15 - Grade 3 Session 1 ELA: Remote Students
- Friday, April 16 - Grade 3 Session 2 ELA: Remote Students
- Tuesday, April 20 - Grade 4 Session 1 Writing: face to Face Students
- Wednesday, April 21 - Grade 4 Session 1 Writing: Remote Students
- Thursday, April 22 - Grade 5 Session 1 Writing: Face to Face Students
- Friday, April 23 - Grade 5 Session 1 Writing: Remote Students
- Monday, April 26 - Grade 3 ELA make Up Testing: Face to Face Students
- Tuesday, April 27 - Grade 3 ELA Make up Testing: Remote Students
- Wednesday, April 28 - Grades 4 & 5 Writing Make up Testing: Face to Face Students
- Thursday, April 29 - Grades 4 & 5 Writing make up Testing: Remote Students



Note: All COVID 19 safety protocols and procedures will continue to be observed during FSA testing.

All ESE and ESOL students will be provided with their appropriate accommodations. This may extend the time for testing for these students.

THE PIRATE GRAM

OFFICIAL NEWSLETTER OF PEMBROKE PINES ELEMENTARY SCHOOL
A TITLE I SCHOOL



Registration for the upcoming school year
2021-2022 is now open

Registration hours are 8:30am - 1:00pm

Any questions, please call the office at
754-323-7000.

KINDERGARTEN REGISTRATION



If your child will be 5 years of age on or before September 1, 2021, it is time to register him/her for Kindergarten.

You need to bring in:

1. original birth certificate or passport
2. official medical examination (Physical)
3. official Florida immunization (Form HD 680)
4. two proofs of residence in the name of the parent/guardian registering the child:

***One current piece of evidence from the following: electric bill, telephone bill, lease or mortgage statement.

***One current piece of evidence from the following: FL driver's license, credit card statement, bank account statement, or automobile insurance.

If you have any questions regarding registration, please call the office at 754-323-7000, or make an appointment to come in and register your child.

NEW TO PPE

1ST THROUGH 5TH GRADE REGISTRATION



Transferring from another Broward County public school to Pembroke Pines Elementary

You need to bring in:

1. Reassignment Letter from Broward County Schools (if out of boundary).
2. Latest report card and/or transcript needed for appropriate grade placement.
3. two proofs of residence in the name of the parent/guardian registering the child:

***One current piece of evidence from the following: electric bill, telephone bill, lease or mortgage statement.

***One current piece of evidence from the following: FL driver's license, credit card statement, bank account statement, or automobile insurance.

Out of County/Out of State/Private School/Charter School

1. original birth certificate or passport
2. official medical examination (Physical)
3. official Florida immunization (Form HD 680)
4. two proofs of residence in the name of the parent/guardian registering the child:

***One current piece of evidence from the following: electric bill, telephone bill, lease or mortgage statement.

***One current piece of evidence from the following: FL driver's license, credit card statement, bank account statement, or automobile insurance.

5. Reassignment Letter from Broward County Schools (if out of boundary).
6. Latest report card and/or transcript needed for appropriate grade placement.